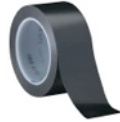


MAKE YOUR OWN PINHOLE CAMERA

You will need:

- ☞ A small box or tin
- ☞ A cardboard tube and card
- ☞ Black matt paint
- ☞ Paint brush
- ☞ Black tape
- ☞ 1x sharp knife
- ☞ Aluminium foil (Tinfoil) or a soft drink can
- ☞ A pair of scissors (optional)



1. Find a tin or box with a removable lid. The material it is made from must be light proof.
2. Paint the inside of the container black. This will stop light from bouncing around inside, so that you get a clear image.
3. Carefully cut a rectangular hole in the middle of the container (about 2cm square).
4. Cut a square piece of aluminium foil (2.5cm square) and smooth it out flat. Use a pin to make a tiny hole in the centre of the foil.
5. Attach the foil to the container making sure the pinhole is over the rectangular hole you cut out before.
6. Make a shutter flap using card and tape that can open and close. Make sure that it completely covers the pinhole.
7. In the darkroom (under the red safe light) cut a piece of photographic paper to fit inside your container. It must not move during exposure. Put the lid on and close the shutter.

Now you are ready to use your pinhole camera!!!

